

MANANA

SKANDA

THE  
RIGHT  
LIFE

Bengaluru's largest child-centric township



# WELCOME TO THE RIGHT LIFE

Embrace ‘The Right Life’, where each dawn brings promise and every dusk, contentment! Your deserving family will revel in homes designed with love and foresight, each corner echoing laughter, warmth, and comfort. With schools merely a whisper away, envision days where your children won’t have to traverse distances but merely step into knowledge and fun, effortlessly!

Our sprawling **100+ acre child-centric community**, with **1800+ SFT homes**, stands amidst expanses of greenery, with **84% open area**, offering not just a space to live, but a cocoon where dreams flourish, bonds strengthen and lives blossom.

Here, every feature is tailored, keeping in mind the vivacity of youth, the innocence of childhood, and the wisdom of golden years. We’ve woven a tapestry of life in hues of joy, wisdom, and vigor.

Welcome to a life well-lived, well-loved, and well-deserved. **The Right Life.**

 **MANA**  
LIVE BRILLIANTLY

 **SKANDA**  
SIGNATURE LIVING



**RIGHT  
DECISION  
TODAY**

**=**

**RIGHT  
LIFE  
TOMORROW**



*The future depends on what  
we do in the present.*

*Mahatma Gandhi*

**Today:** 2 hours spent on travel to school

**Tomorrow:** 2 hours spent on  
hobbies or studies

**Today:** Subconsciously consuming polluted air

**Tomorrow:** Breathe fresh air in a  
corridor unlikely to get crowded

**Today:** Hop around your locality looking  
for different needs

**Tomorrow:** Stay in a township that  
you can get everything in

**Today:** Juggling remote work in a cramped space

**Tomorrow:** Embrace the hybrid work

**mode in a spacious and comfortable  
home office**

**Today:** Noise and disruptions from urban chaos

**Tomorrow:** Enjoy serenity and  
embrace green living

**Today:** Limited recreational options for families

**Tomorrow:** Multitude of family-friendly  
activities and a sense of community

***Today: Take the right decision!***



# WHAT'S THE RIGHT LIFE?

Representation Images

- ✓ **Bengaluru's largest child-centric township** on Sarjapur-Varthur Road.
- ✓ First of its kind community that focuses on the **well-being of all its residents**, and in particular your children
- ✓ **Child-centric and sports-life style features** carefully designed in a modern architectural design language
- ✓ **31+ acres** in phase 1, **100+ acres** across multiple phases
- ✓ **Premium lifestyle apartments** of 3 and 3.5 BHK
- ✓ **Lake-side lifestyle**, next to pristine lake
- ✓ **Biophilic** landscape design



# RIGHT NEXT TO EVERYTHING

Experience the ease of access to everything you need for a well-rounded and fulfilling lifestyle.

## Hospitals

- ✓ Manipal Hospitals
- ✓ Sakra World Hospital
- ✓ Motherhood Hospitals
- ✓ Columbia Asia Hospitals
- ✓ Belenus Champion Hospitals
- ✓ Cloudnine Hospitals
- ✓ Apollo Hospitals
- ✓ Rainbow Children's Hospital

## Tech Parks

- ✓ RGA Tech Park
- ✓ Wipro Corporate Office
- ✓ Microsoft Office
- ✓ RMZ Ecospace
- ✓ Global Technology Park
- ✓ Pritech Park SEZ
- ✓ RMZ Eco World
- ✓ Embassy Tech Village
- ✓ Bagmane Constellation Business Park

## Schools

- ✓ Greenwood High International School
- ✓ Harvest International School
- ✓ Indus International School
- ✓ Philomena School
- ✓ Inventure Academy
- ✓ One World International School
- ✓ Delhi Public School East
- ✓ TISB
- ✓ Head Start Educational Academy

## Retail Spaces

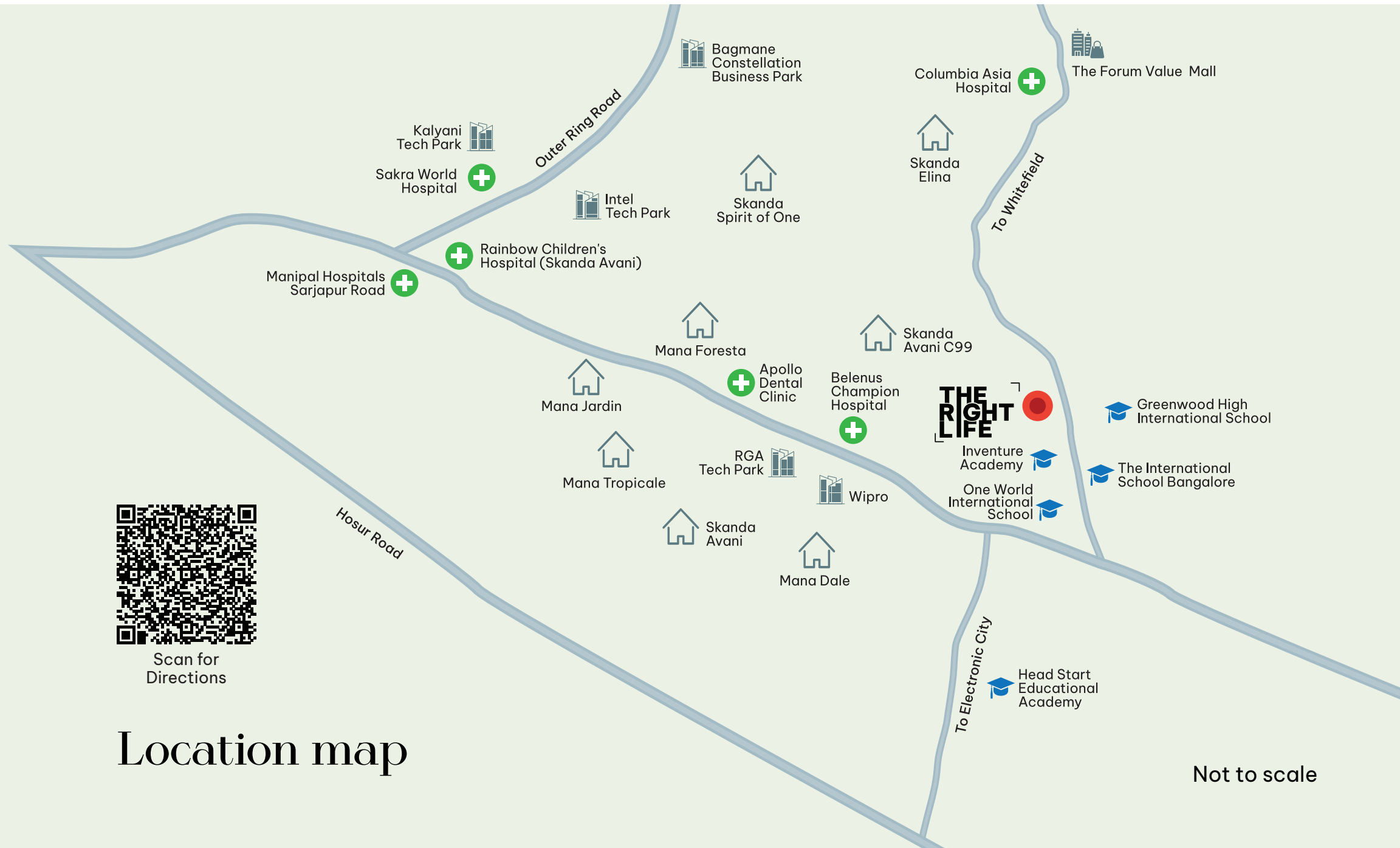
- ✓ Soul Space Spirit Centro Mall
- ✓ Phoenix Market City
- ✓ Market Square Mall
- ✓ Forum Neighbourhood Mall
- ✓ Total Mall



Representation Image



Representation Image





Belenus Champion Hospital



Rainbow Children's Hospital by Skanda Avani



Inventure Academy



One World International School



RGA Tech Park



TISB



Manipal Hospitals



RMZ Eco World



Sakra Hospitals



Artist Impression

# DESIGN PHILOSOPHY

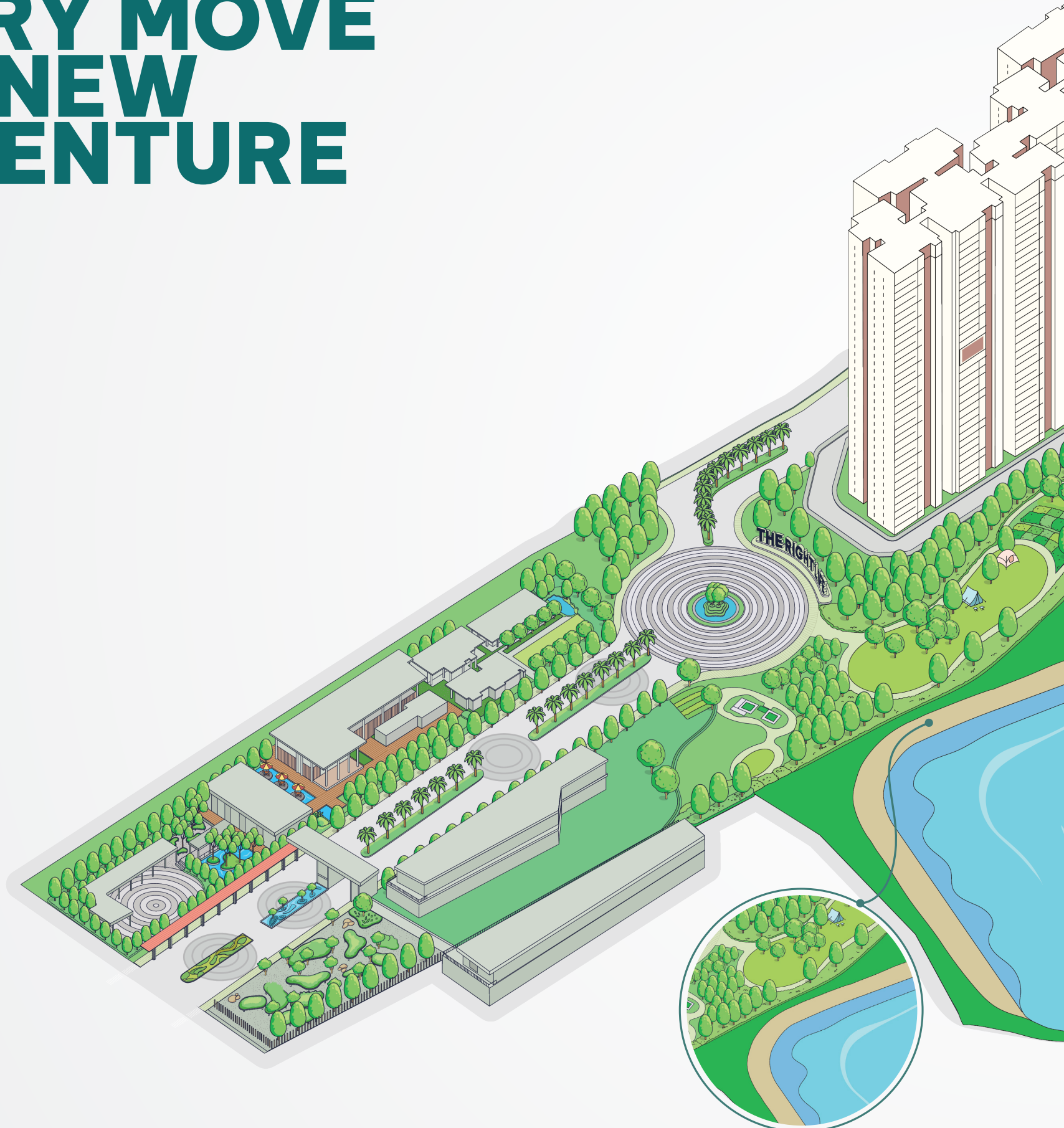
This community is designed to be child-centric, providing families with a tranquil lakeside living experience. In Phase 1, we prioritize a lake-centric approach, ensuring maximum views of the natural lake and promoting overall wellness, especially among kids. Inspired by the lake environment, our features include amenities such as kids' wet play areas, a large pool, a skate park, labyrinthine gardens, a bump track, sports fields, and dedicated wellness spaces.

---

## Statistics:

- ✓ **31+ acre** in phase 1
- ✓ **100+** acres across multiple phases
- ✓ **84%** open area
- ✓ **51%** hardscape area
- ✓ **33%** softscape area

# EVERY MOVE IS A NEW ADVENTURE



*Lake-side lifestyle*



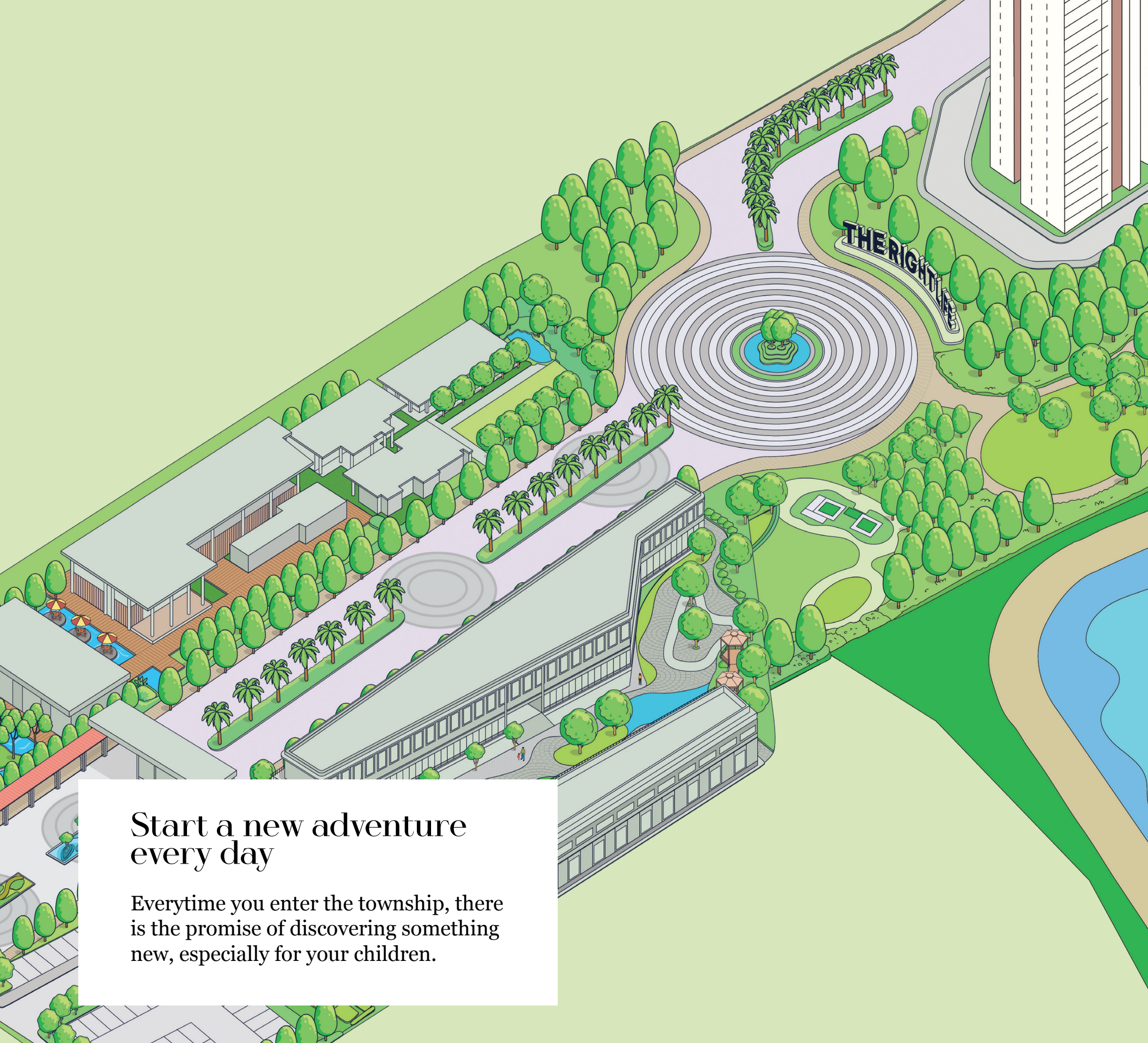
*This is an artist's impression and details are not up to scale.*



*Large event lawn area*

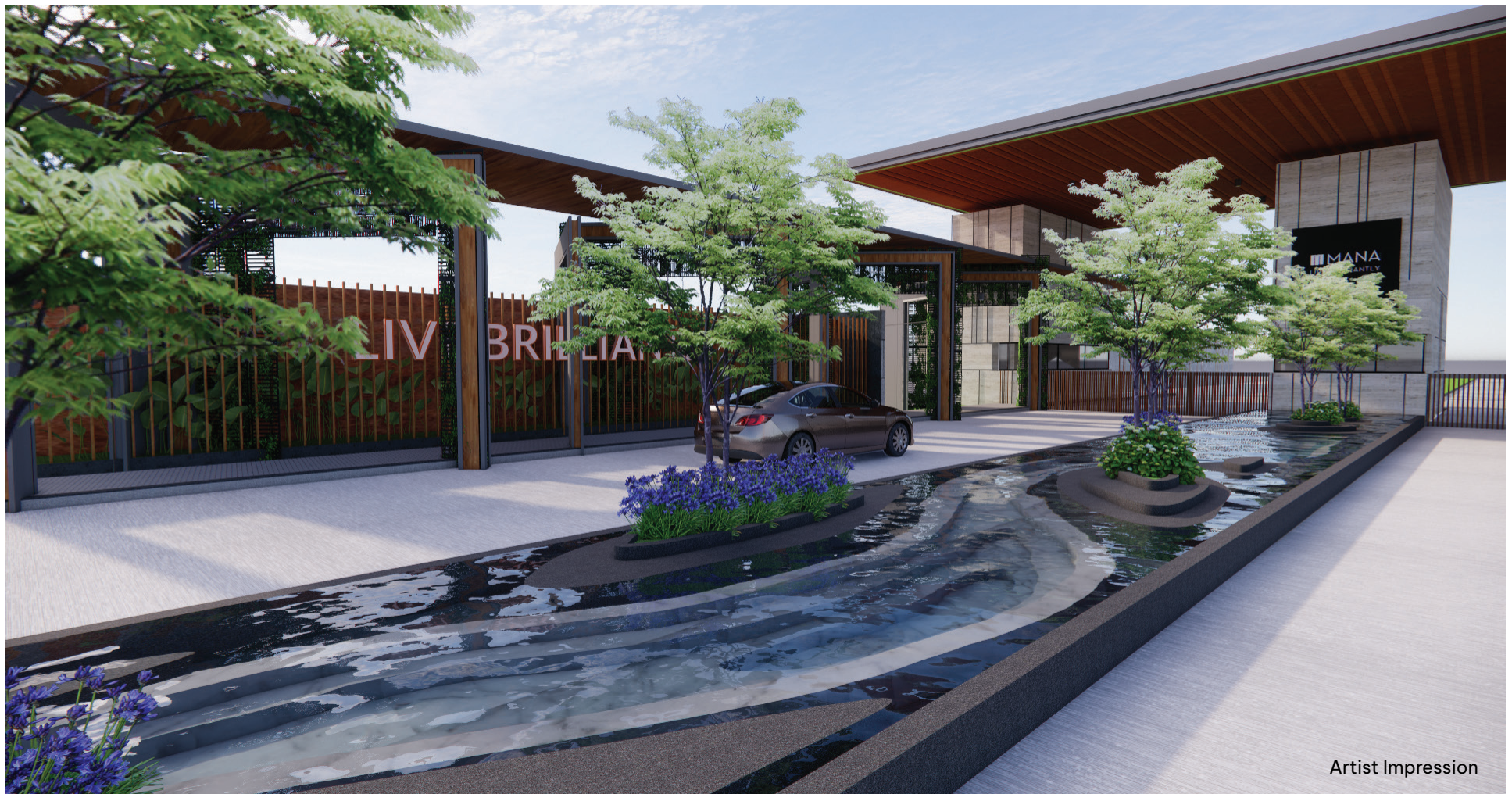


*Water zone with kid's pool and boardwalk pool*

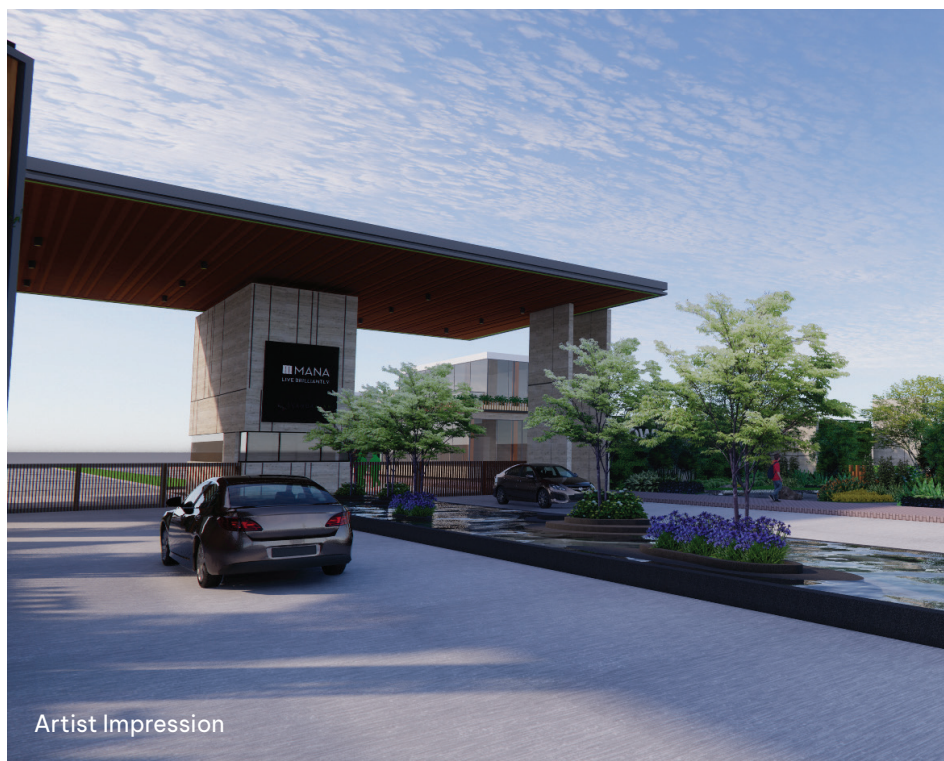


**Start a new adventure  
every day**

Everytime you enter the township, there is the promise of discovering something new, especially for your children.



Artist Impression



Artist Impression



Artist Impression

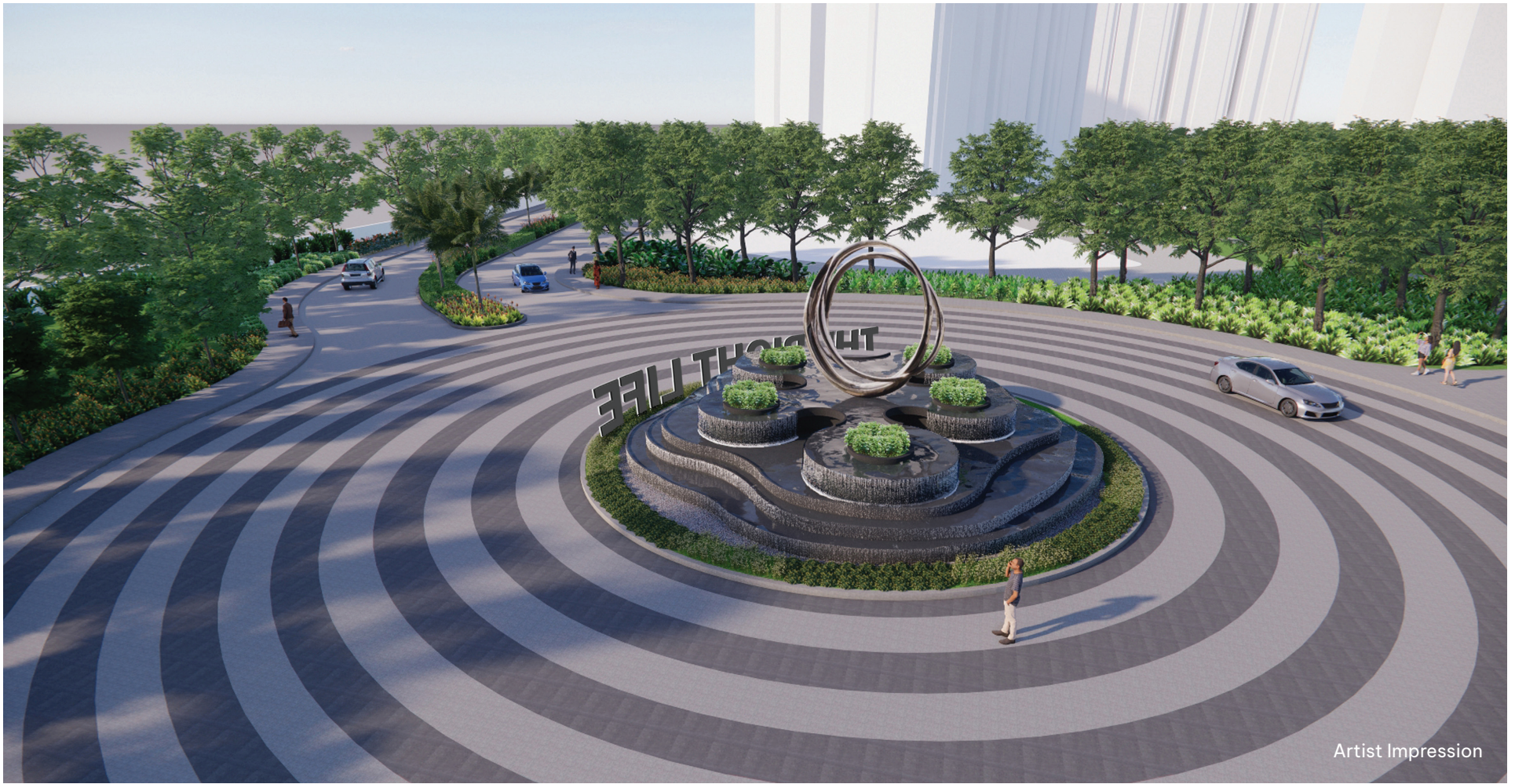
Your visitors can experience a grand entry in the entrance plaza

2m central landscaping

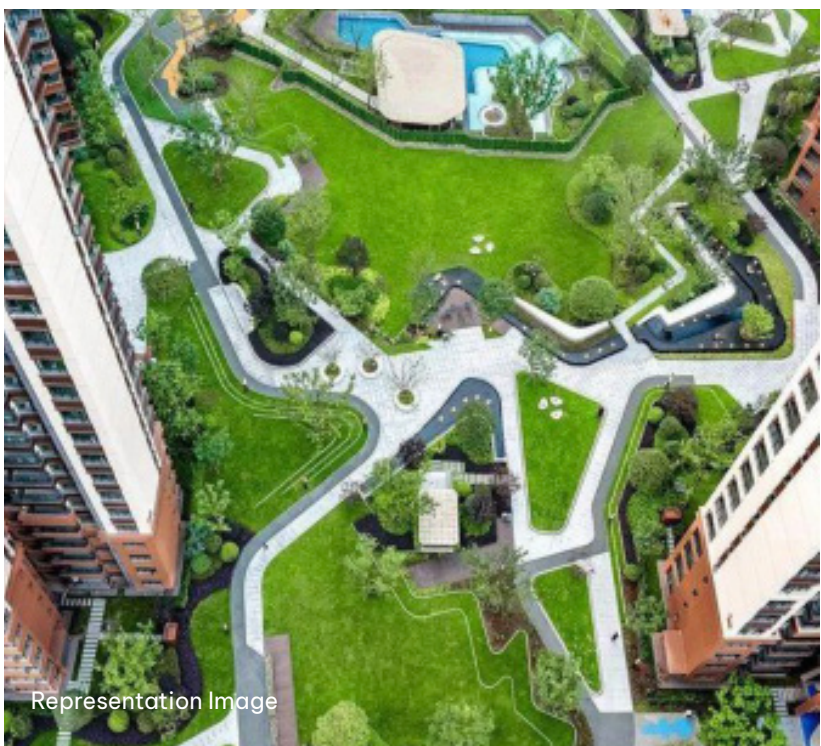


## Go around the roundabout!

A familiar sight whenever you leave or reach home. From here on, every move is a new adventure.



A central roundabout area to provide a feeling of vastness



Dotted with art and landscape elements



2m walkways on both sides



## Move to lake-front

Take a relaxing walk by the lake or advance to the majestic central plaza.



Artist Impression



Representation Image

Innovative fence design that maximises views of the lake for walkers while providing security

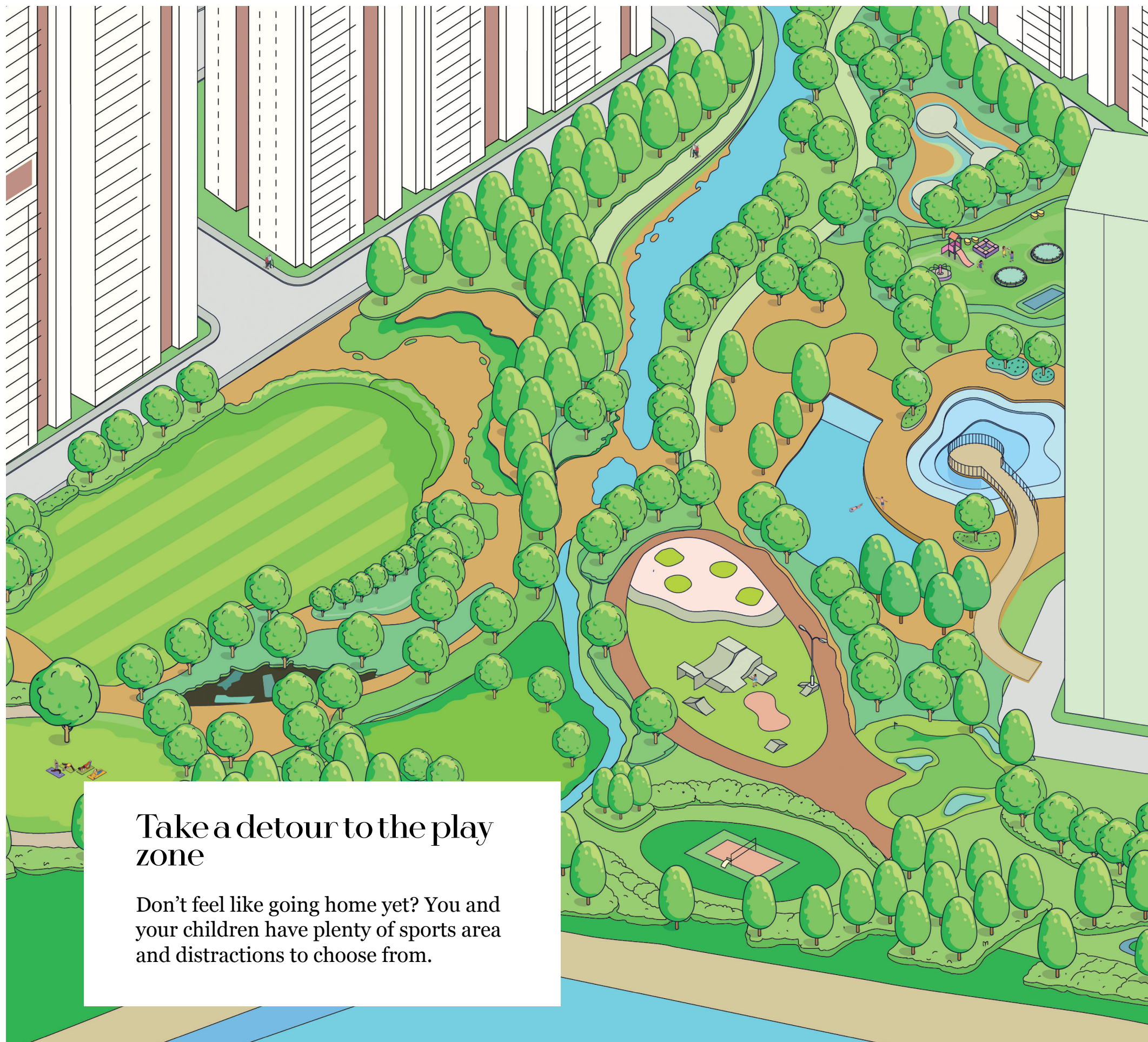
Artist Impression



Central plaza filled with social and interactive areas for the whole family

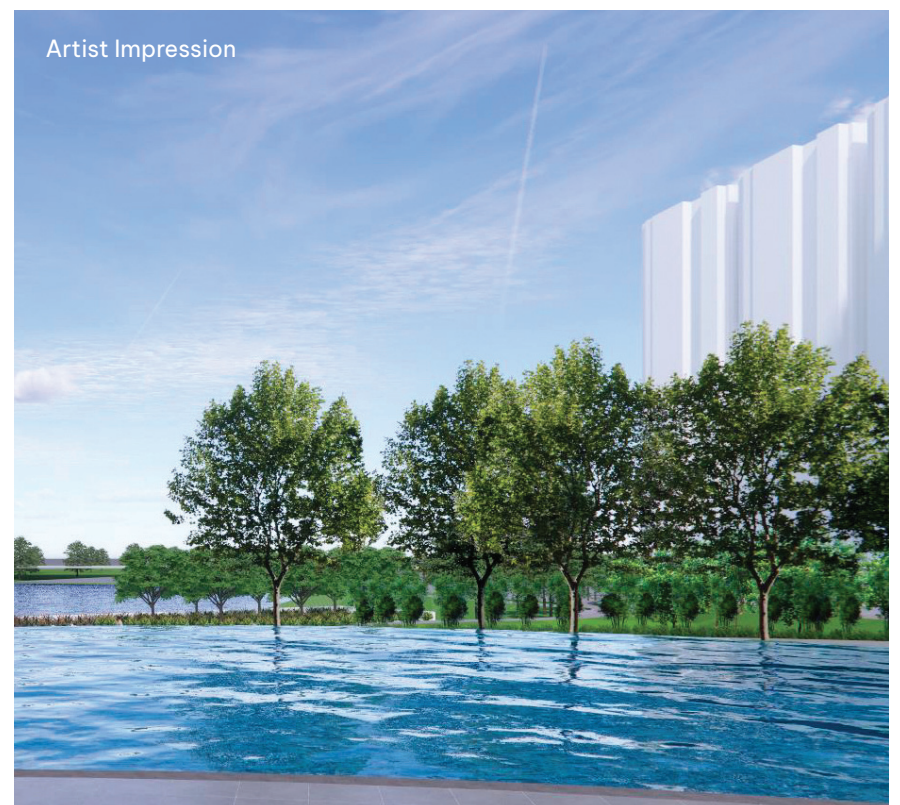


Entrance to towers. Smooth experience,  
with visitor parking slots



## Take a detour to the play zone

Don't feel like going home yet? You and your children have plenty of sports area and distractions to choose from.



## For the Toddler (1.5 to 4 years)

- ✔ Kids' play area
- ✔ Moon deck\*

## For Young Kids (4 to 6 years)

- ✔ Space themed kids play area\*
- ✔ Musical deck\*
- ✔ Star gazing deck\*

## For the Preteen (6 to 12 years)

- ✔ Trampoline park
- ✔ Soccer field / Cricket field
- ✔ Basketball court
- ✔ Boot camp
- ✔ Kids' pool with cascade water feature
- ✔ Skating park
- ✔ Bump track
- ✔ Bird watching tower

## For the Teens (13 to 16 years)

- ✔ Tennis court\*
- ✔ Glamping area
- ✔ Sand volleyball
- ✔ Labyrinth
- ✔ Hammock garden
- ✔ Machan
- ✔ Multi-use games area (MUGA)\*





## For Active Families

- ✓ Yoga lawn
- ✓ Butterfly garden
- ✓ Periphery walking trail
- ✓ Urban farming
- ✓ Fruit orchard
- ✓ Event lawn area
- ✓ Stage\*
- ✓ Golf putting
- ✓ Boardwalk pool
- ✓ Rain garden
- ✓ Outdoor gym
- ✓ Outdoor work pods
- ✓ Pet park
- ✓ Meadow garden\*



## Others

- ✓ Stepped seater
- ✓ Floating pavilion
- ✓ Deck with seaters
- ✓ Outdoor seating area
- ✓ Deck with bamboo pergola\*
- ✓ Pylon mound\*
- ✓ Lawn area\*



***\* This feature is in Phase 1.1***

# A CHILD-CENTRIC COMMUNITY



**PHASE 1.1**



Scan to  
discover more

**PHASE 1 MASTER PLAN**  
**31+ ACRES DEVELOPMENT**



**PHASE 1.0**

- |                                     |   |                                |
|-------------------------------------|---|--------------------------------|
| 01. Hammock garden                  | 10. Bump track                            | 19. Soccer field/Cricket field |
| 02. Fruit orchard                   | 11. Labyrinth                             | 20. Deck with seaters          |
| 03. Glamping area                   | 12. Periphery walking trail               | 21. Basketball court           |
| 04. Stepped seater                  | 13. Kids' pool with cascade water feature | 22. Boot camp                  |
| 05. Event lawn area                 | 14. Boardwalk pool                        | 23. Urban farming              |
| 06. Skating & trampoline park       | 15. Floating pavilion                     | 24. Outdoor gym                |
| 07. Sand volleyball                 | 16. Kids' play area                       | 25. Outdoor work pods          |
| 08. Yoga lawn with butterfly garden | 17. Machan                                | 26. Bird watching tower        |
| 09. Golf putting                    | 18. Rain garden                           | 27. Pet park                   |

# Features for the active family



Basketball court



Soccer field



Outdoor gym



Pet park



Open air theater (OAT)



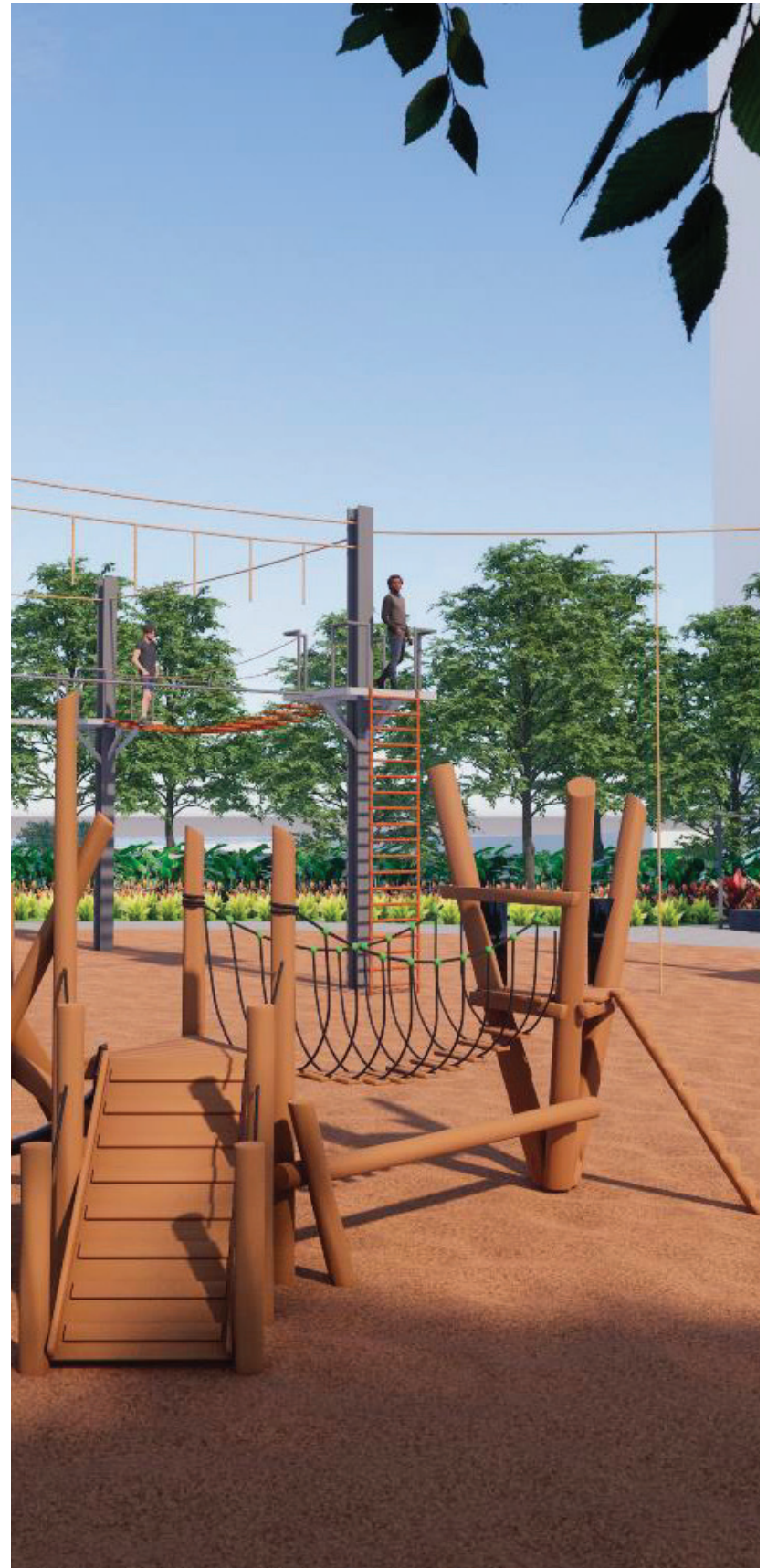
Outdoor work pods



Fruit orchard



Golf putting



Boot camp

# Lifestyle features



Yoga lawn



Seating along the pool



Kids' pool



Cascade water feature and boardwalk pool



Pergola

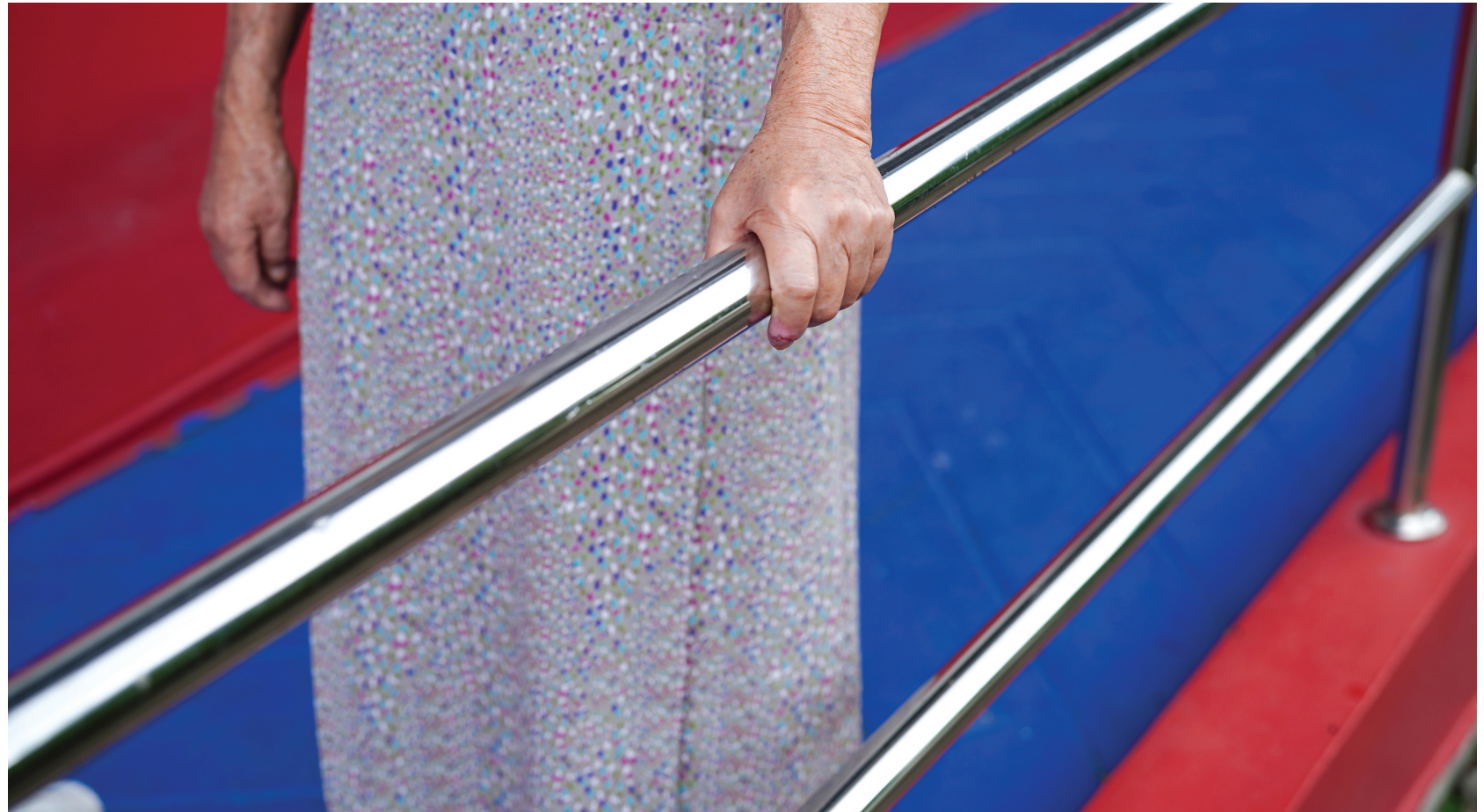


The Right Club

# Features for the active-seniors



Zones for seniors



Senior-friendly design (ramps, tactile tiles, railings, proper lighting)



Reflexology path



Periphery walking trail

# Health & safety features



Better air quality because of green areas



Good water supply



Vehicle traffic segregated from pedestrian zones



Low noise levels



Comprehensive fire safety measures



Foolproof safety and security measures

# Nature features



Lakeside living (Maximized utilization of lake view)



Bird watching tower



13 acres softscape area



Dedicated no-vehicle zones



Hammock park



Labyrinth



Open lawn space for events



Meadow garden



Native and traditional plants

# Sustainability features



Recharge of rainwater



Manure creation



Rain gardens that prevent flooding and reduce pollution



Bladder tanks to hold rain water for irrigation



Root barriers



Place for kitchen garden



Waste segregation



Mulching and composting

# Sustainability features



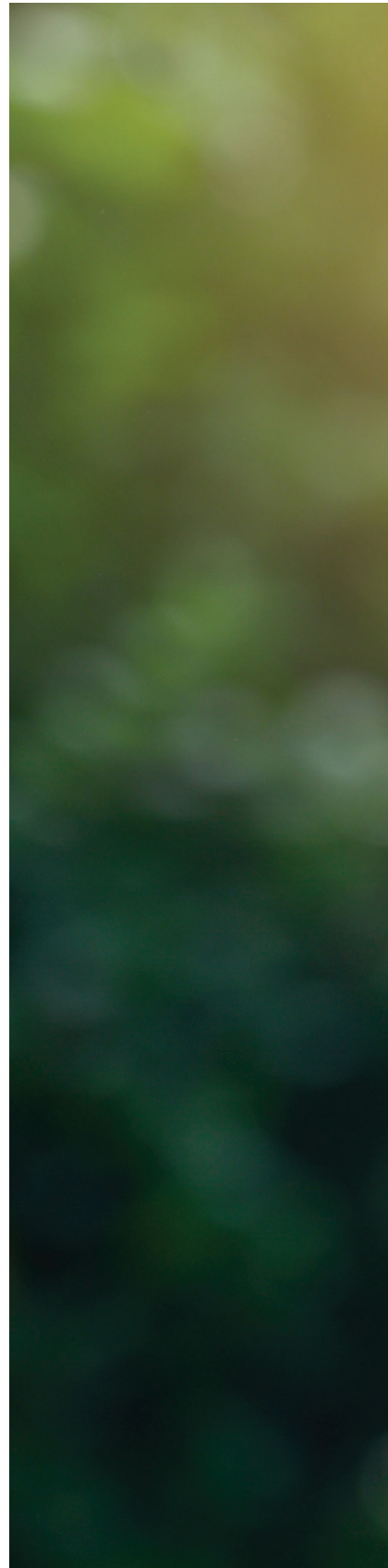
Water recycling



Facility for irrigation



Subsurface drainage





# Inclusivity features





Ramps



Tactile tiles



Railings



Proper lighting



# SPECIFICATIONS



## CIVIL

---

### Structure

- ✔ RCC-framed structure with RCC walls.
- ✔ Open kitchen concept.
- ✔ Walls 160mm thick.

## ARCHITECTURE

---

### Doors & Windows

- ✔ Acacia wood frame with teak skin main door.
- ✔ SS coated brass fittings for the main door.
- ✔ Acacia wood door frame and flush door for other doors.
- ✔ SS fittings for other doors.
- ✔ UPVC windows with mosquito mesh.
- ✔ UPVC french door for balcony with mosquito mesh.
- ✔ UPVC ventilators (provision for exhaust fan).

### Paints

- ✔ Emulsion for internal walls, enamel paint for doors and grills, natural polish for main doors as per architectural drawings.
- ✔ External emulsion paints (weather coat) with texture finish.





## Flooring

- ✔ Laminated wooden flooring for master bedroom.
  - ✔ Vitrified tiles in all other bedrooms, living room and dining room.
  - ✔ Designer ceramic tiles in balconies.
  - ✔ Anti-skid ceramic tiles for bathroom floors.
  - ✔ Designer ceramic tiles in toilet walls.
- 

## Internal and External Finishes

- ✔ Emulsion paint for interiors.
  - ✔ Polished or enamel painted doors.
  - ✔ Weather coat painting for exteriors.
- 

## Kitchen

- ✔ Wash provision in utility.
- ✔ Two taps and one water purifier provision.

# PLUMBING, ELECTRICAL & SERVICES

---

## Toilets

- ✓ Grohe / American Standard / Roca / Vitra or equivalent make of CP Fittings and accessories of good quality in general range.
- ✓ Grohe / American Standard / Roca / Vitra or equivalent make sanitary fittings of any white shades in colour.
- ✓ Concealed hot and cold CPVC plumbing pipes.

---

## Electrical

- ✓ Electrical fittings of Indo-Asian / Anchor or equivalent make.
- ✓ Concealed fire-resistant copper wiring (Anchor / Havells or equivalent).
- ✓ T.V. & telephone point in living and master bedroom.

## Power backup

- ✓ Generator backup for common area (lifts and other) & complete lighting back up for individual flats.
- ✓ Kirloskar or equivalent make generator sets.

---

## Elevators

- ✓ Schindler/Otis/ Kone or equivalent brand automatic lifts as per architectural drawings.
- ✓ Multiple elevators with passenger capacity of 10-13 persons

---

## Car Parking

- ✓ One covered car parking will be provided for every apartment.





Artist Impression



# THE RIGHT PEOPLE

A premium lifestyle township by

 **MANA**

LIVE BRILLIANTLY

 **SKANDA**

SIGNATURE LIVING

Artist Impression



# DOING THE RIGHT THING

## About Neobuild Ventures

Introducing Neobuild Ventures, a collaborative endeavor between two renowned developers, **Mana Projects and Skanda**, dedicated to shaping the future of real estate in Bangalore. Combining Mana's established market presence and streamlined manufacturing capabilities with Skanda's commitment to exceptional, eco-friendly housing, Neobuild Ventures aims to deliver affordable yet premium-quality homes that embody modern living.


*Neobuild*  
VENTURES





Mana & Skanda have been on the right path since 2000.

 **MANA**

 **24+**  
years of experience

 **29+**  
projects

 **7000+**  
happy clients

 **8M+**  
sq feet delivered

 **1000+**  
staff & contractors

 **SKANDA**

 **12+**  
years of experience

 **8+**  
projects

 **1800+**  
happy clients

 **3M+**  
sq feet delivered

 **500+**  
staff & contractors



Artist Impression

**MANA SKANDA**

THE ART OF LUXURIOUS LIVING

[www.therightlife.in](http://www.therightlife.in)

RERA: PRM/KA/RERA/1251/308/PR/280324/006766

The Right Life, Sarjapur - Varthur Road, Bangalore

**Call +91 7676 555 000**

**Disclaimer:** The Company does not guarantee or represent the information contained in this document, which is to be used for general information only. The company does not guarantee or represent that the information contained within this document is correct. Any interested party should verify all the information including designs, plans, specifications, facilities, features, payment schedules terms of sales, etc. independently with the company prior to concluding any decision for buying in any of the projects.

The user of the brochure confirms that he/she has not relied on this information alone when making any booking/ purchase in any project of the company. The information, visuals, renders and creative depictions contained herein are artistic impressions, Indicative in nature and are for general information purposes only. The actual design/colour/finish/construction/landscape could undergo changes based on changes in design, layouts, materials, site conditions, etc. Any furniture paintings, or any items of personalised nature not specifically mentioned in the contract and shown in the images are only for the purpose of illustration and does not form part of the offering. Further, the renders/visuals of the area beyond the project site are artistic in nature and while every reasonable care has been taken in providing the information, under no circumstances the company or its employees, managers or representatives shall be held liable for any loss or damage, special or consequential or otherwise, arising from the use of or reliance on information provided in the brochure without verifying the same independently with the company.

Version: 28/3/2024